



BATTERY MODULAR CONNECTORS



健和興端子股份有限公司

507彰化縣線西鄉彰濱東三路8號

電話: +886-4-7582765

傳真: +886-4-7582786 統編: 59276051

K. S. TERMINALS INC.

No.8 Zhangbin E. 3rd Road, Xianxi Township,
Changhua County 507, Taiwan (R.O.C.)

TEL: +886-4-7582765

FAX: +886-4-7582786



Battery Modular Connectors (BMC)

Single-Pole BMC & Double Pole BMC



Battery modular connectors (BMC) play a crucial role in establishing connections between batteries and power sources. They are especially essential in renewable energy power systems and generators, including solar power, wind power, hydropower, and hybrid systems.

KST BMC have earned the prestigious UL 1977 certification for their ability to transmit high currents effectively.

KST BMC comes in Single-Pole and Double-Pole series. The poles represent supported circuits: a 1-pole connector manages one circuit, while a 2-pole connector handles two simultaneously. These series cover 15 to 350 Amps current ratings, suitable for up to 600 Volts of continuous AC or DC use.

APPLICATIONS



Battery Systems &
Power Distribution



Automotive, RV & Marine
(Connecting Batteries, Power
Inverters, and Electrical Systems)



Industrial Machinery,
Automation Systems,
Control Panels



Forklifts, Golfcarts,
Electric Mobility
Aids, Scooters



Portable Generators & Power
Devices, Emergency Power
Systems, Portable Generators



Uninterruptable
Power Supply (UPS)

Single-Pole BMC Series

4 Housing Sizes (Small, Medium, Medium-Large, Large)



The Single-Pole Battery Modular Connectors (BMC) offer versatile solutions for diverse power connection needs. Available in four housing sizes, these connectors support various contacts, each with a specific amperage rating and wire size.

They handle currents up to 230A and wire sizes from #20 AWG to 1/0 (60 mm²), providing flexibility. Housing colors aid identification, and these housings can be paired with different contacts for wire-to-wire, wire-to-board, wire-to-device, or board-to-board connections.

This adaptability ensures seamless integration into various systems, meeting unique connectivity needs. In summary, these connectors are compact, customizable, and reliable, accommodating different amperage requirements and wire sizes, making them suitable for diverse applications across industries.

FEATURES

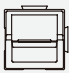
- Precision contact alignment & swiping system ensures minimal contact resistance at high current, with a swiping action that cleans the contact surface during connection/disconnection.
- Interchangeable genderless design facilitates quick and easy assembly.
- Standardized genderless housing reduces SKUs and simplifies critical inventory management.
- Silver plated copper contacts provide excellent conductivity. Optional tin-plated contacts available for Single-Pole BMC 045 (Small) housing.
- Color-coded housings ensure connectors are easily and accurately assembled and mated.
- The slotted modular connectors allow for convenient horizontal or vertical stacking of multiple modules, providing efficient configuration and expansion options.
- Single-Pole BMC ground connector is green for clear visual identification of the ground terminal. Available in Gendered and Genderless variations.
- Chemical Resistant Housings, PBT – BMC1M (Medium) offer durability against environmental factors. Ideal for Automotive, Industrial, and Personal Mobility industries.
- UL94 V-0/V-2 Deploy with confidence knowing that KST connectors meets strict flammability ratings.

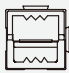
SPECIFICATIONS

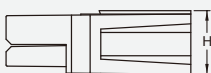
- Operating Temperature Range: -20°C to 125°C
- Voltage Rating: 600 Volts
- Contact Retention Force (lbs.): 25
- UL94 V-2 (Small)/ UL94 V-0 (Medium/Medium-large/Large): Deploy with confidence knowing that KST connectors meets strict flammability ratings.
- Housing Material: PC (Chemical Resistant - PBT)

Single-Pole BMC 045 (Small)




**BMC1S**
Standard

**BMC1S-1**
Contact Proof



H .331(8.4)



W .236(6.6)

.969 (24.6)

Standard, Contact Proof and Ground Housing Dimensions

Single-Pole BMC 045 (Small) Housings

Item No.	Description	Housing Colors	Quantity
BMC1S	1-Pole 045 (Small) Housing - Standard	BKBLBRGRGYORPIPURDWHYW	500 Box
BMC1S-1	1-Pole 045 (Small) Housing - Contact Proof	BKBLBRGRGYORPIPURDWHYW	500 Box
BMC1S-FG	1-Pole 045 (Small) Housing Ground Connector ♀	GR	500 Box
BMC1S-MG	1-Pole 045 (Small) Housing Ground Connector ♂	GR	500 Box
BMC1S-G-GR	1-Pole 045 (Small) Housing Ground Connector MFBL	GR	500 Box
BMC1S-WI	1-Pole 045 (Small) Housing PCB SMT Mounting Wing	GR RD	500 Box
BMC1S-FSP	1-Pole 045 (Small) Housing Spacer Short ♀	GR RD WH	500 Box
BMC1S-MSP	1-Pole 045 (Small) Housing Spacer Long ♂	GR RD WH	500 Box

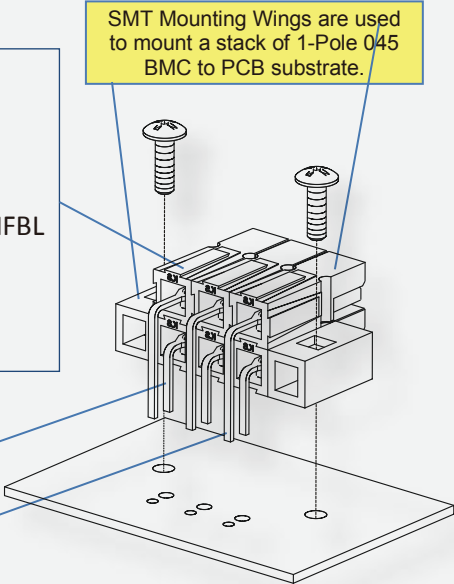
Single-Pole BMC 045 (Small) Contacts

Item No.	Description	Contact Barrel Size AWG (mm²)	Current Rating (Amps)	Max. Wire Insulation Dia. (mm)	Quantity
BMC1AG	Contact 015A	20-16 (.75-1.5)	15	4.45	1000 Box
BMC2ST	Contact 030A	16-12 (1.5-3.0)	30	4.45	3000 Reel
BMC2AG	Contact 030A	16-12 (1.5-3.0)	30	4.45	1000 Box
BMC3ST	Contact 045A	14-10 (2.5-6.0)	45	4.45	3000 Reel
BMC1S-FG2ST	Contact Ground Connector 010A ♀	16-14 (1.5-2.5)	10	3.48	3000 Reel
BMC1S-MG2ST	Contact Ground Connector 010A ♂	16-14 (1.5-2.5)	10	3.48	3000 Reel
BMC1S-G3ST	Contact Ground Connector 010A MFBL	16-14 (1.5-2.5)	10	3.48	3000 Reel
BMCPCL1A	Contact PCB 025A - 1 st Tier Hole A	14-10 (2.5-6.0)	25	NA	1000 Box
BMCPCL2A	Contact PCB 025A - 2 nd Tier Hole A	14-10 (2.5-6.0)	25	NA	1000 Box
BMCPCL2B	Contact PCB 025A - 2 nd Tier Hole B	14-10 (2.5-6.0)	25	NA	1000 Box

1-Pole 045 BMC PCB Stack Configuration with PCB Contacts & Mounting Wings

BMC1S	1-Pole 045 (Small) Housing - Standard
BMC1S-1	1-Pole 045 (Small) Housing - Contact Proof
BMC1S-FG	1-Pole 045 (Small) Housing Ground Connector ♀
BMC1S-MG	1-Pole 045 (Small) Housing Ground Connector ♂
BMC1S-G-GR	1-Pole 045 (Small) Housing Ground Connector MFBL
BMC1S-WI	1-Pole 045 (Small) Housing PCB Mounting Wing
BMC1S-FSP	1-Pole 045 (Small) Housing Spacer Short ♀
BMC1S-MSP	1-Pole 045 (Small) Housing Spacer Long ♂

BMCPCL1A	1-Pole 045 Contact PCB 025A - 1 st Tier Hole A
BMCPCL2A	1-Pole 045 Contact PCB 025A - 2 nd Tier Hole A
BMCPCL2B	1-Pole 045 Contact PCB 025A - 2 nd Tier Hole B



Single-Pole BMC 045 (Small) Stack Enclosures

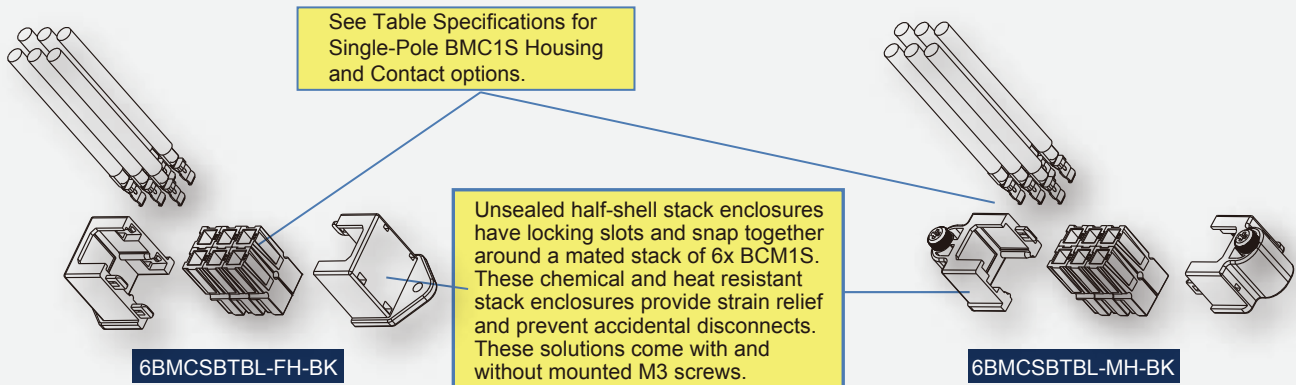


● 6BMCSBTBL-FH-BK



● 6BMCSBTBL-MH-BK

Stack Enclosures for 6x BMC1S Half-shell Wire-to-Wire/Board Configuration



6BMCSBTBL-FH-BK Stack Enclosure Half-shell 6x BMC1S (Unsealed)

6BMCSBTBL-MH-BK Stack Enclosure Half-shell 6x BMC1S w/ Mounted M3s (Unsealed)

Item No.	Description	Pole	Quantity
2BMC1S-L-BK	1-Pole 045 Stack Enclosure 2x BMC1S Wire-to-Wire ♀	2	50 Box
2BMC1S-R-BK	1-Pole 045 Stack Enclosure 2x BMC1S Wire-to-Wire w/ Latch ♂	2	50 Box
4BMCS-SET-L-BK	1-Pole 045 Stack Enclosure 4x BMC1S Wire-to-Wire ♀	4	1 Box
4BMCS-SET-R-BK	1-Pole 045 Stack Enclosure 4x BMC1S Wire-to-Wire w/ Latch ♂	4	1 Box
4BMCS-SET-RW-BK	1-Pole 045 Stack Enclosure 4x BMC1S Wire-to-Wire ♂	4	1 Box
4BMCWPS-F-SET-BK	1-Pole 045 Stack Enclosure 4x BMC1S Wire-to-Wire/Panel (Sealed) ♀	4	1 Box
4BMCWPS-M-SET-BK	1-Pole 045 Stack Enclosure 4x BMC1S Wire-to-Wire/Panel (Sealed) ♂	4	1 Box
6BMCS-SET-L-BK	1-Pole 045 Stack Enclosure 6x BMC1S Wire-to-Wire ♀	6	1 Box
6BMCS-SET-R-BK	1-Pole 045 Stack Enclosure 6x BMC1S Wire-to-Wire w/ Latch ♂	6	1 Box
6BMCS-SET-RW-BK	1-Pole 045 Stack Enclosure 6x BMC1S Wire-to-Wire ♂	6	1 Box
6BMCSBTBL-FH-BK	1-Pole 045 Stack Enclosure 6x BMC1S Wire-to-Panel Half-Shell ♀	6	1 Box
6BMCSBTBL-MH-BK	1-Pole 045 Stack Enclosure 6x BMC1S Wire-to-Panel Half-Shell w/ mounted M3s ♂	6	1 Box
6BMCWPS-F-SET-BK	1-Pole 045 Stack Enclosure 6x BMC1S Wire-to-Wire/Panel (Sealed) ♀	6	1 Box
6BMCWPS-M-SET-BK	1-Pole 045 Stack Enclosure 6x BMC1S Wire-to-Wire/Panel (Sealed) ♂	6	1 Box
8BMCWPS-F-SET-BK	1-Pole 045 Stack Enclosure 8x BMC1S Wire-to-Wire/Panel (Sealed) ♀	8	1 Box
8BMCWPS-M-SET-BK	1-Pole 045 Stack Enclosure 8x BMC1S Wire-to-Wire/Panel (Sealed) ♂	8	1 Box

Stack Enclosures for Single-Pole 045 BMC (Small)

Stack Enclosures are designed to provide protection for stacked Single-Pole BMC 045 connectors in an ergonomic and user-friendly form factor. This series of stack enclosures offers a range of options, including 2, 4, 6, and 8 stack configurations, catering to various needs for inline wire-to-wire and wire-to-panel connections.

Stack Enclosure for Single-Pole 045 BMC 2x BMC1S | Wire-to-Wire configuration (Unsealed)

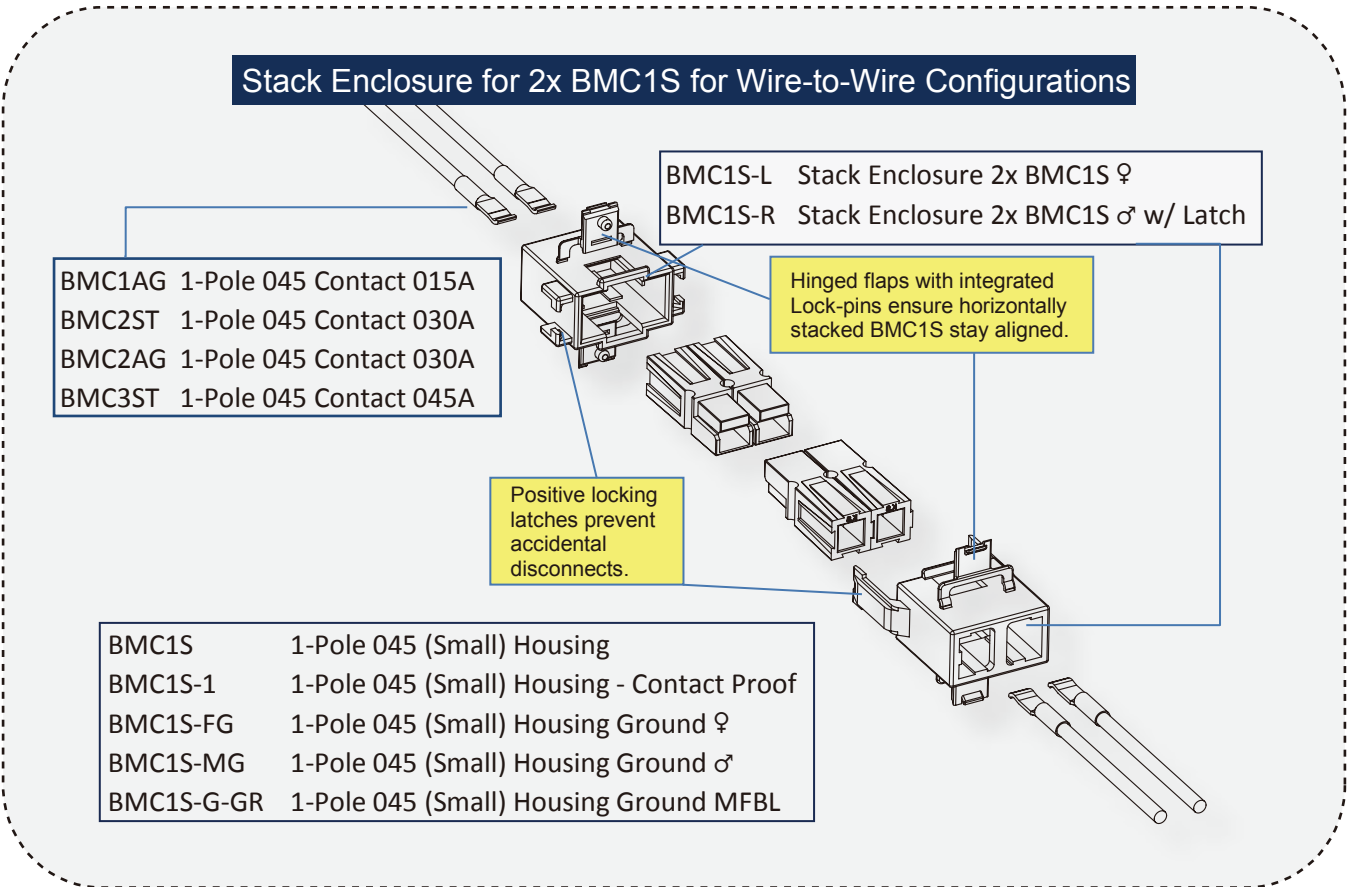


Figure 1. Stack Enclosure for 2x BMC1S provides a durable chemical & heat resistant housing for wire-to-wire configurations.

This Stack enclosure provides reliable protection for stacked Single-Pole BMC 045 connectors in an ergonomic and user-friendly form factor. It accommodates two horizontally stacked BCM1S connectors, offering secure and hassle-free insertion. Equipped with locking latches, this enclosure effectively prevents accidental disconnects, ensuring a stable connection. Additionally, the design includes hinged flaps with integrated pin-locks to maintain alignment and stability of the stacked BMC connectors.



Stack Enclosure for 4x & 6x BMC1S Wire-to-Wire with optional Latches (Unsealed)

These Stack Enclosures are purposefully designed for inline (Wire-to-Wire) mating, comprising male and female housings. The female housing presents two variants: one without locking latches and another with, offering an additional positive lock mechanism to prevent accidental disconnects. To augment overall functionality, these enclosures are intended to be used in conjunction with reinforcing cable clamps and lock pins, which can be obtained separately for enhanced security and stability.

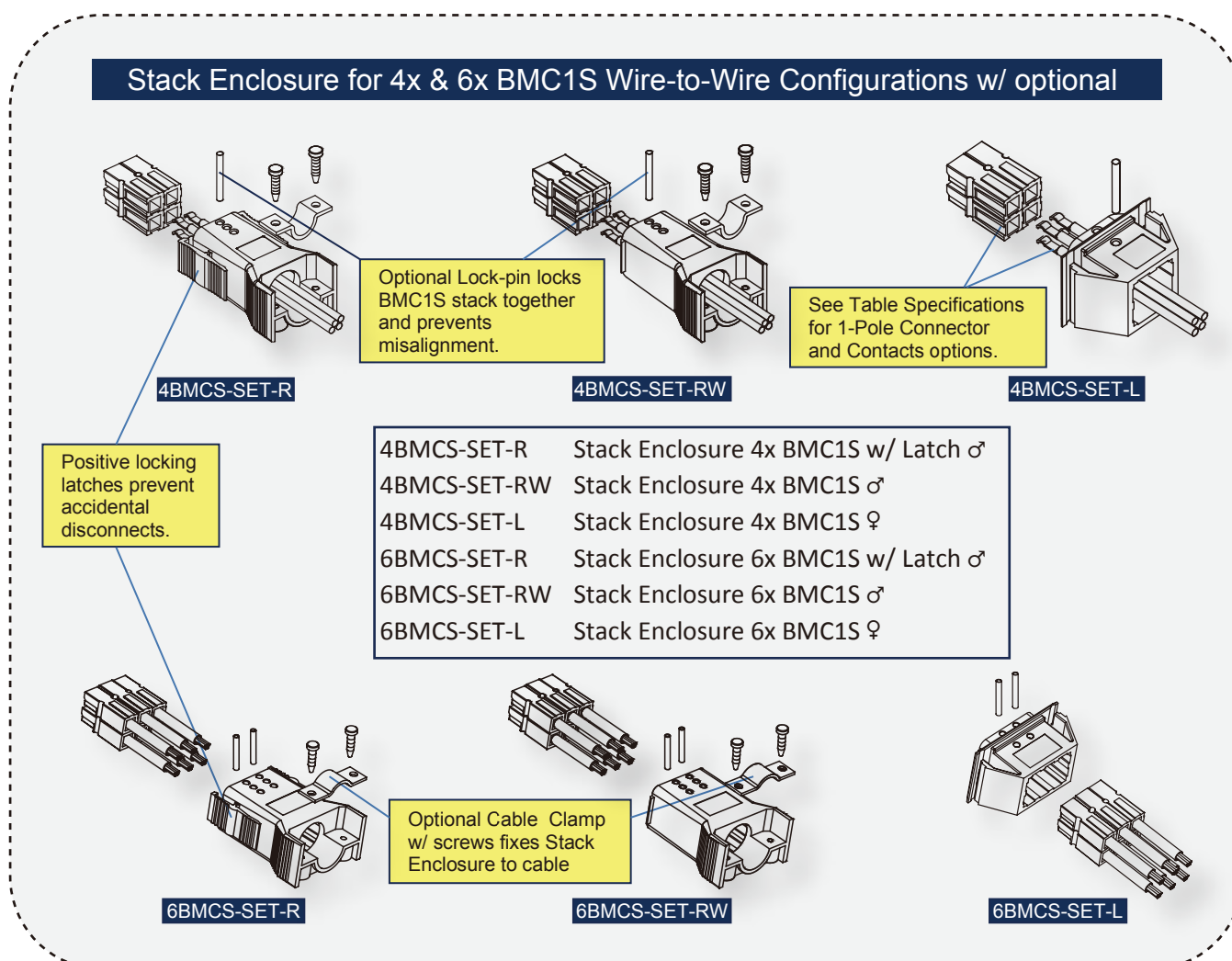


Figure 2. Stack Enclosure for 4x, 6x and BMC1S provides a durable chemical & heat resistant housing for wire-to-wire configurations.

Stack Enclosure for 4x, 6x 8x BMC1S Wire-to-Wire/Panel configurations (Sealed)

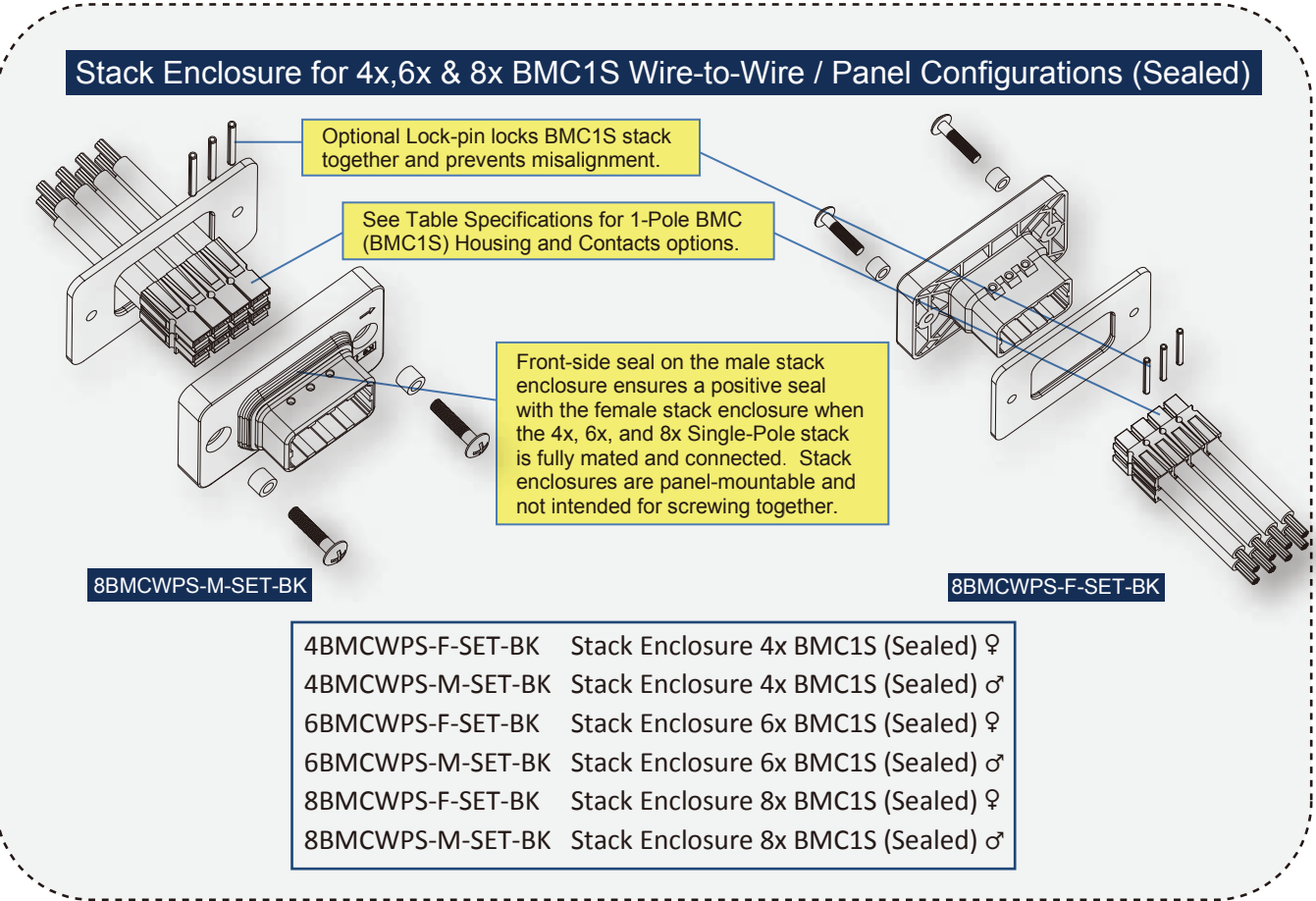


Figure 3 Stack Enclosure for 4x, 6x, and 8x BMC1S provides a durable chemical & heat resistant housing for wire-to-wire/panel configurations.

Stack Enclosures for 6x BMC1S Half-Shell Wire-to-Wire/Board Configurations (Sealed)

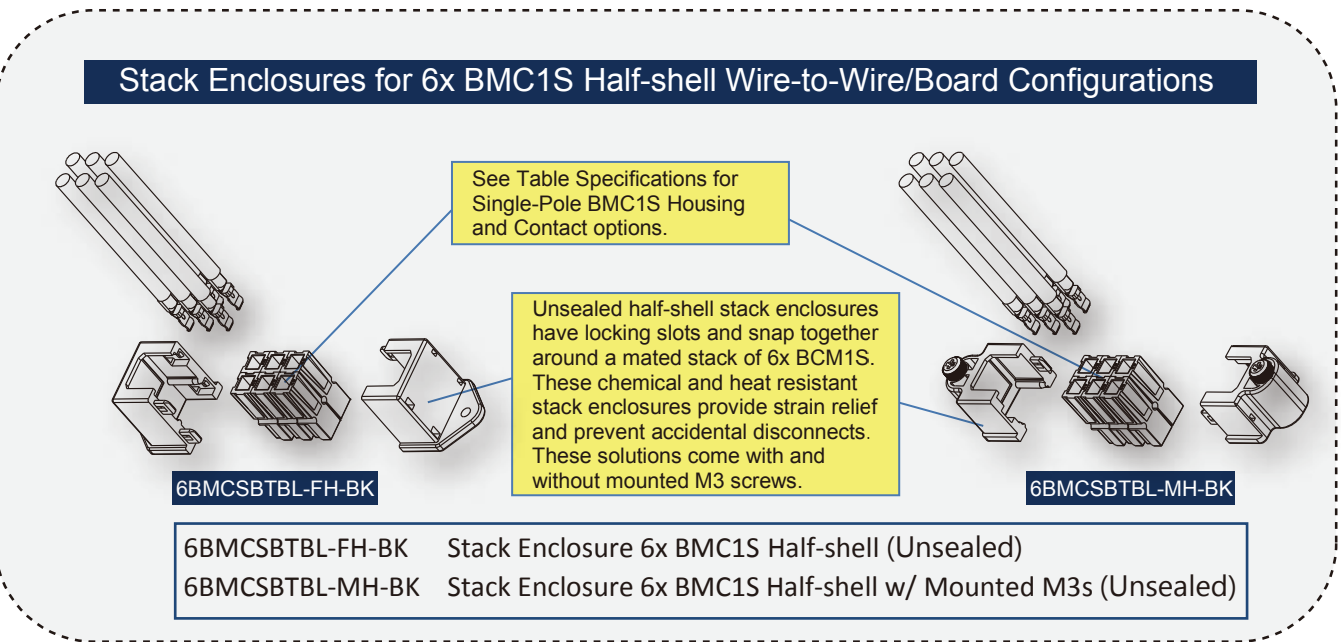
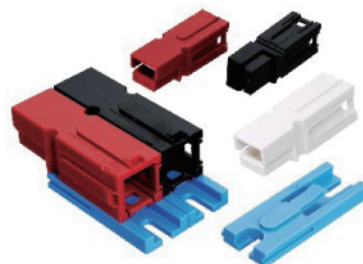
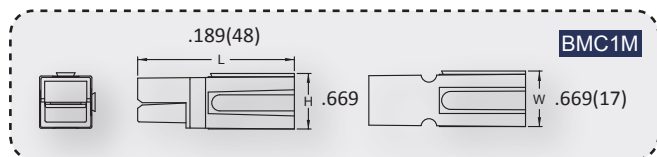


Figure 4 Stack Enclosure for 6x BMC1S provides a durable chemical & heat resistant housing for wire-to-wire/board configurations.

Single-Pole BMC 075 (Medium)



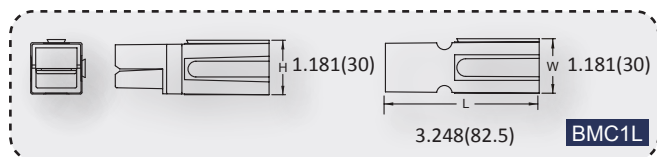
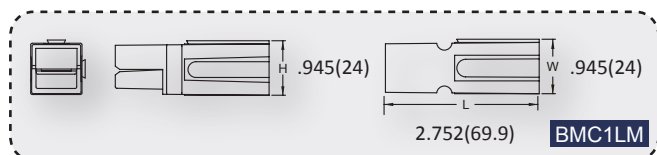
Single-Pole BMC 075 (Medium) Housing & Accessories

Item No.	Description	Housing Colors	Quantity
BMC1M	1-Pole 075 (Medium) Housing	BK BL GR RD WH YW	50 Box
BMC1M-LK	1-Pole 075 (Medium) Housing (Locking Slot)	BK BL GR RD WH YW	50 Box
BMC1MRC-BK	1-Pole 075 (Medium) Housing (Chemical Resistant)	BK BL GR RD WH	50 Box
K7-4.97*15.5	1-Pole 075 (Medium) Housing Pin-lock	NA	1000 Box
BMC1M-SMTL	1-Pole 075 (Medium) Housing SMT Seat	NA	100 Box

Single-Pole BMC 075 (Medium) Contacts

Item No.	Description	Contact Barrel Size AWG (mm ²)	Current Rating (Amps)	Max. Wire Insulation Dia. (mm)	Quantity
BMC5AG	1-Pole 075 Contact 050A	12-10 (3.0-6.0)	50	11	500 Box
BMC8AG	1-Pole 075 Contact 060A	8 (8)	60	11	500 Box
BMC14AG	1-Pole 075 Contact 075A	6 (13)	75	11	500 Box

Single-Pole BMC 120 (Medium-Large) & 180 (Large)



Single-Pole BMC 120 (Medium-Large) & 180 (Large) Housing & Accessories

Item No.	Description	Housing Colors	Quantity
BMC1LM	1-Pole 120 (Medium-Large) Housing	BK BL GR RD WH YW	25 Box
K7-4.97*25.4	1-Pole 120 (Medium-Large) Housing Pin-lock	NA	1000 Box
BMC1L	1-Pole 180 (Large) Housing	BK BL GR RD WH	25 Box
K7-4.97*31.5	1-Pole 180 (Large) Housing Pin-lock	NA	1000 Box

Single-Pole BMC 120 (Medium-Large) & 180 (Large) Contacts

Item No.	Description	Contact Barrel Size AWG (mm ²)	Current Rating (Amps)	Max. Wire Insulation Dia. (mm)	Quantity
BMCMS14AG	1-Pole 120 Contact 080A	6 (13)	80	14.6	100 Box
BMCMS22AG	1-Pole 120 Contact 100A	4 (21)	100	14.6	100 Box
BMCMS38AG	1-Pole 120 Contact 120A	2 (34)	120	14.6	100 Box
BMCM14AG	1-Pole 180 Contact 080A	6 (13)	80	14.6	100 Box
BMC22AG	1-Pole 180 Contact 125A	4 (21)	125	19.05	100 Box
BMC38AG	1-Pole 180 Contact 150A	2 (34)	150	19.05	100 Box
BMC60AG	1-Pole 180 Contact 175A	1/0 (60)	175	19.05	50 Box

Double-Pole BMC Series

(Standard, GX & WP)

- **Double-Pole BMC - Standard**
4 Housing Sizes - Small, Medium-Small, Medium, Large
- **Double-Pole BMC GX - Two additional Auxiliary Ports**
2 Housing Sizes - Medium, Large
- **Double-Pole BMC WP - Sealed (IP67)**
3 Housing Sizes - Small, Medium-Small, Large



Double-Pole BMC connectors feature a robust one-piece thermal polycarbonate housing with stainless steel spring backplates for consistent contact force, resulting in low resistance and high efficiency. Both sides of the Standard and GX connectors are identical, enhancing versatility. Their genderless design allows for easy 180-degree flipping, reducing costs and simplifying assembly.

Double-Pole BMC WP (Sealed) connectors are sold in male and female sets, including housing, contacts, seals, and a cable clamp. Double-Pole BMC WP (Sealed) unlike Standard and GX Series, are not genderless.

These connectors are UL-rated up to 600 volts and have silver-plated contacts for low resistance and durability. With their sturdy build, simple assembly, and top-notch performance, Double-Pole BMC connectors provide reliable electrical connections across various industries.

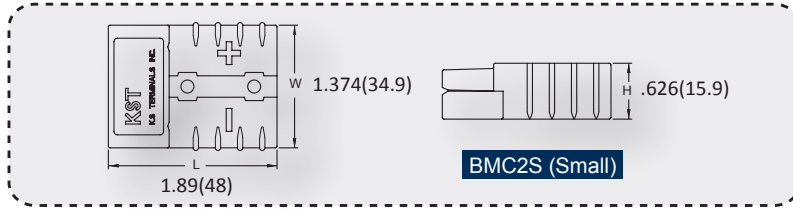
FEATURES

- Each housing size, available in multiple colors, has a unique mechanical key-slot, preventing hazardous mismatches.
- Double-Pole BMC series comes in various sizes, each supporting multiple electrical contact options, ensuring adaptability across applications.
- Double-Pole BMC ensure high current throughput and minimal resistance through precision contact alignment and swiping, maintaining optimal performance.
- Double-Pole BMC standard and GX genderless housing allow for quick assembly and swapping, streamlining inventory management.
- Colored housings provide flexibility, aiding safe and correct assembly, while UL-rating guarantees compliance with safety standards.
- Operating effectively from -20°C to 125°C, these connectors offer broad temperature range performance.



Double-Pole BMC Series (Standard)

Double-Pole BMC 050 (Small)



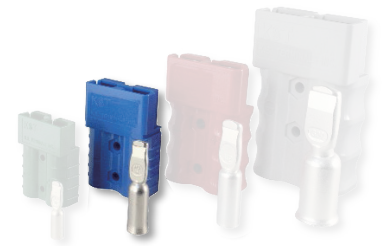
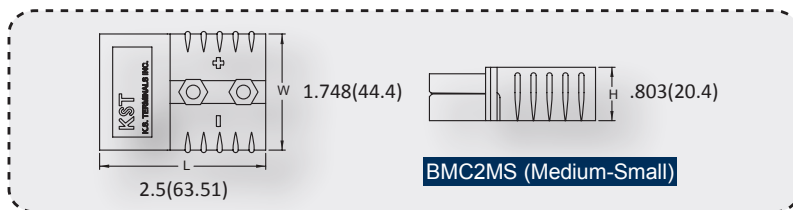
Double-Pole BMC 050 (Small) Housings & Accessories

Item No.	Description	Current Rating (Amps)	Housing Colors	Quantity
BMC2S	2-Pole 050 (Small) Housing	35~50	BK BL GR GY OR RD YW	25 Box
BMC2S-DC1	2-Pole 050 (Small) Housing Rubber Dust Cover	NA	BK	50 Box
BMC2S-HD	2-Pole 050 (Small) Housing Handle	NA	BK GR RD	50 Box
BMC2S-FP	2-Pole 050 (Small) Housing Cable Clamp	NA	NA	25 Box
BMC2S-EB-S	2-Pole 050 (Small) Environmental Boot - Source	NA	BK	10 Box
BMC2S-EB-L	2-Pole 050 (Small) Environmental Boot - Load	NA	BK	10 Box

Double-Pole BMC 050 (Small) Contacts

Item No.	Description	Contact Barrel Size AWG (mm ²)	Current Rating (Amps)	Max. Wire Insulation Diameter (mm)	Quantity
BMC5AG	2-Pole 050 Contact 035A	12-10 (3-6)	35	11.18	500 Box
BMC8AG	2-Pole 050 Contact 045A	8 (8)	45	11.18	500 Box
BMC14AG	2-Pole 050 Contact 050A	6 (13)	50	11.18	500 Box

Double-Pole BMC 120 (Medium-small)



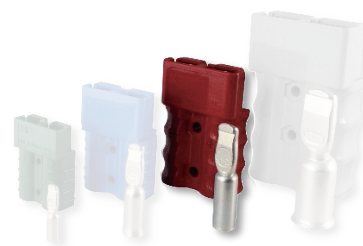
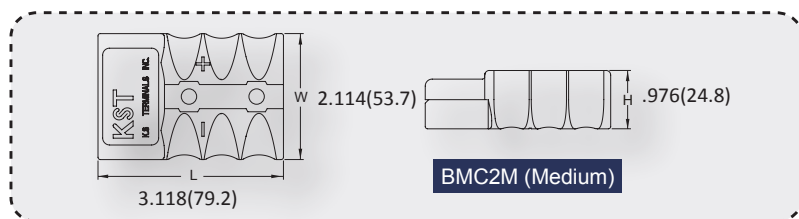
Double-Pole BMC 120 (Medium-Small) Housings & Accessories

Item No.	Description	Current Rating (Amps)	Housing Colors	Quantity
BMC2MS	2-Pole 120 (Medium-Small) Housing	80~120	BL GY RD	10 Box
BMC2MS-HD	2-Pole 120 (Medium-Small) Housing Handle	NA	RD	10 Box
BMC2MS-DC1	2-Pole 120 (Medium-Small) Housing Rubber Dust Cover	NA	BK	10 Box

Double-Pole BMC 120 (Medium-Small) Contacts

Item No.	Description	Contact Barrel Size AWG (mm ²)	Current Rating (Amps)	Max. Wire Insulation Diameter (mm)	Quantity
BMCMS14AG	2-Pole 120 Contact 080A	6 (13)	80	14.6	200 Box
BMCMS22AG	2-Pole 120 Contact 100A	4 (21)	100	14.6	100 Box
BMCMS38AG	2-Pole 120 Contact 120A	2 (38)	120	14.6	100 Box

Double-Pole BMC 175 (Medium)



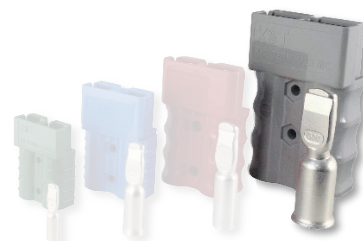
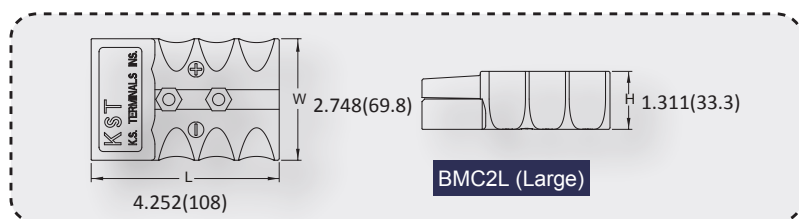
Double-Pole BMC 175 (Medium) Housings & Accessories

Item No.	Description	Current Rating (Amps)	Housing Colors	Quantity
BMC2M	2-Pole 175 (Medium) Housing	80~175	BLGYORRDYW	5 Box
BMC2M-DC2	2-Pole 175 (Medium) Housing Dust Cover PC	NA	BK	5 Box
BMC2M-DC1	2-Pole 175 (Medium) Housing Dust Cover Rubber	NA	BK	5 Box
BMC2M-HD	2-Pole 175 (Medium) Housing Handle (2 Bolt)	NA	RD	50 Box

Double-Pole BMC 175 (Medium) Contacts

Item No.	Description	Contact Barrel Size AWG (mm ²)	Current Rating (Amps)	Max. Wire Insulation Diameter (mm)	Quantity
BMCM14AG	2-Pole 175 Contact 080A	6 (13)	80	14.6	100 Box
BMC22AG	2-Pole 175 Contact 125A	4 (21)	125	19.05	100 Box
BMC38AG	2-Pole 175 Contact 150A	2 (38)	150	19.05	100 Box
BMC60AG	2-Pole 175 Contact 175A	1/0 (60)	175	19.05	50 Box

Double-Pole BMC 350 (Large)



Double-Pole BMC 350 (Large) Housings & Accessories

Item No.	Description	Current Rating (Amps)	Housing Colors	Quantity
BMC2L	2-Pole 350 (Large) Housing	250~350	BLGRGYORRDYW	50 Box
BMC2L-HD	2-Pole 350 (Large) Housing Handle (2 Bolt)	NA	RD	50 Box
BMC2L-DC1	2-Pole 350 (Large) Housing Rubber Dust Cover	NA	BK	1 Box

Double-Pole BMC 350 (Large) Contacts

Item No.	Description	Contact Barrel Size AWG (mm ²)	Current Rating (Amps)	Max. Wire Insulation Diameter (mm)	Quantity
BMC70AG	2-Pole 350 Contact 250A	2/0 (70)	250	28	25 Box
BMC80AG	2-Pole 350 Contact 275A	3/0 (80)	275	28	25 Box
BMC100AG	2-Pole 350 Contact 300A	4/0 (100)	300	28	25 Box
BMC150AG	2-Pole 350 Contact 350A	300MCM (150)	350	28	25 Box

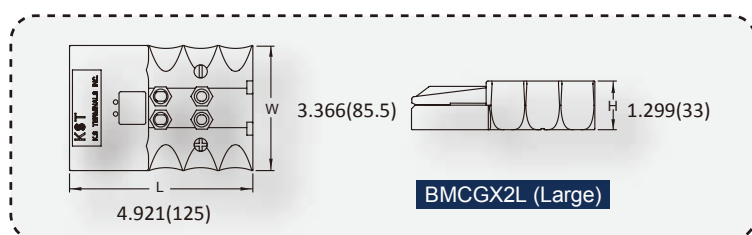
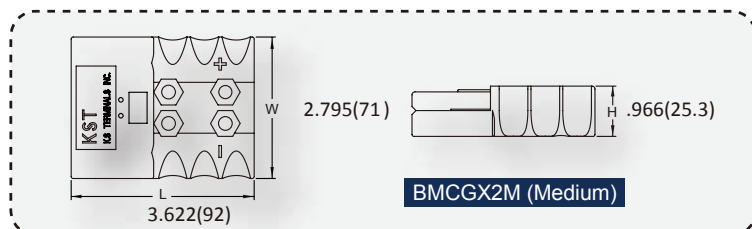
Accessories-connector Handles

- BMC2S-HD
- BMC2MS-HD
- BMC2M-HD
- BMC2L-HD



Double-Pole BMC GX Series

Double-Pole BMC GX connectors (Medium / Large)



The 2-Pole BMC GX connectors enhance the capabilities of the standard 2-Pole BMC® connectors by offering additional features. Alongside the two standard primary power contacts, GX housings provide support for two auxiliary power/signal contacts. This additional space is specifically designed to accommodate two Single-Pole BMC 045 power/signal connectors, allowing for expanded connectivity options. This innovative design expands the versatility and functionality of the 2-Pole BMC GX connectors, catering to a wider range of power and signal requirements.

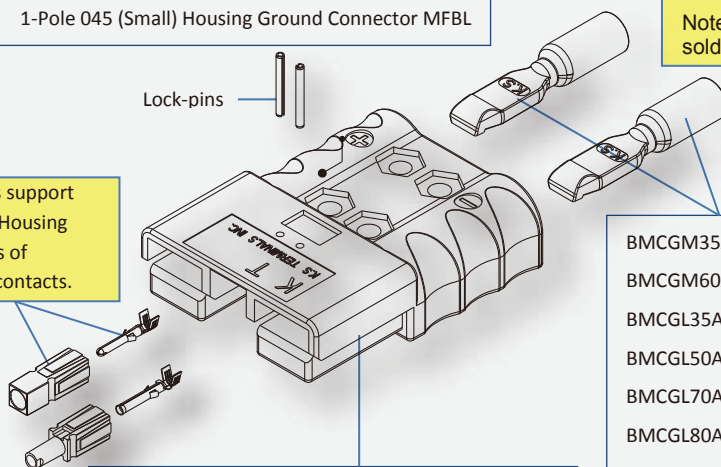
BMC1S	1-Pole 045 (Small) Housing - Standard
BMC1S-1	1-Pole 045 (Small) Housing - Contact Proof
BMC1S-FG	1-Pole 045 (Small) Housing Ground Connector ♀
BMC1S-MG	1-Pole 045 (Small) Housing Ground Connector ♂
BMC1S-G-GR	1-Pole 045 (Small) Housing Ground Connector MFBL

2-Pole BMC GX housings come in two sizes 175 GX (Medium) and 350 GX (Large). GX Housings come with two additional auxiliary ports which support 2x 1-Pole 045 (BMC1S) Connectors

Note: Contacts & handles, lock-pins sold separately

Auxiliary-ports support 2x 1-Pole 045 Housing (BMC1S) series of housings and contacts.

Lock-pins



BMCGX2M - 2-Pole 175 (Medium) Housing
BMCGX2L - 2-Pole 350 (Large) Housing

BMCGM35AG	2-Pole 175 GX Contact 080A
BMCGM60AG	2-Pole 175 GX Contact 125A
BMCGL35AG	2-Pole 350 GX Contact 160A
BMCGL50AG	2-Pole 350 GX Contact 175A
BMCGL70AG	2-Pole 350 GX Contact 250A
BMCGL80AG	2-Pole 350 GX Contact 275A
BMCGL100AG	2-Pole 350 GX Contact 300A
BMCGL150AG	2-Pole 350 GX Contact 350A

Double-Pole BMC 175 GX (Medium) 350 GX (Large) Housings

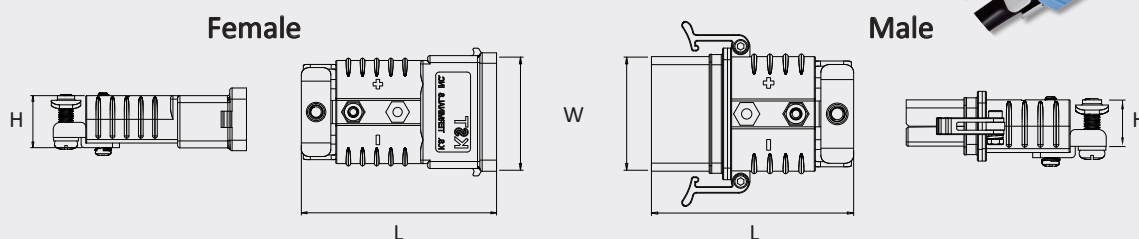
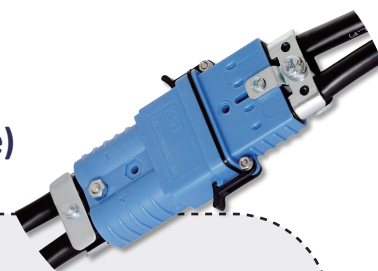
Item No.	Description	Current Rating (Amps)	Housing Colors	Quantity
BMCGX2M	2-Pole 175 GX (Medium) Housing	80~125	BLGRGYORRDYW	5 Box
BMCGX2M-HD	2-Pole 175 GX (Medium) Housing Handle (4 Bolt)	NA	GYRD	50 Box
BMCGX2L	2-Pole 350 GX (Large) Housing	160~350	BKGRGYORRDYW	5 Box
BMCGX2L-HD	2-Pole 350 GX (Large) Housing Handle (4 Bolt)	NA	GYRD	50 Box

Double-Pole BMC 175 GX (Medium) 350 GX (Large) Contacts

Item No.	Description	AWG (mm²)	Current Rating (Amps)	Max. Wire Insulation Diameter (mm)	Quantity
BMCGM35AG	2-Pole 175 GX Contact 080A	2 (38)	80	19.05	100 Box
BMCGM60AG	2-Pole 175 GX Contact 125A	1/0 (60)	125	19.05	50 Box
BMCGL35AG	2-Pole 350 GX Contact 160A	2 (38)	160	27.94	100 Box
BMCGL70AG	2-Pole 350 GX Contact 250A	2/0 (70)	250	27.94	50 Box
BMCGL80AG	2-Pole 350 GX Contact 275A	3/0 (80)	275	27.94	25 Box

Double-Pole BMC WP Series

Double-Pole BMC WP 050 (Small), 120 (Medium-Small), 300 (Large)



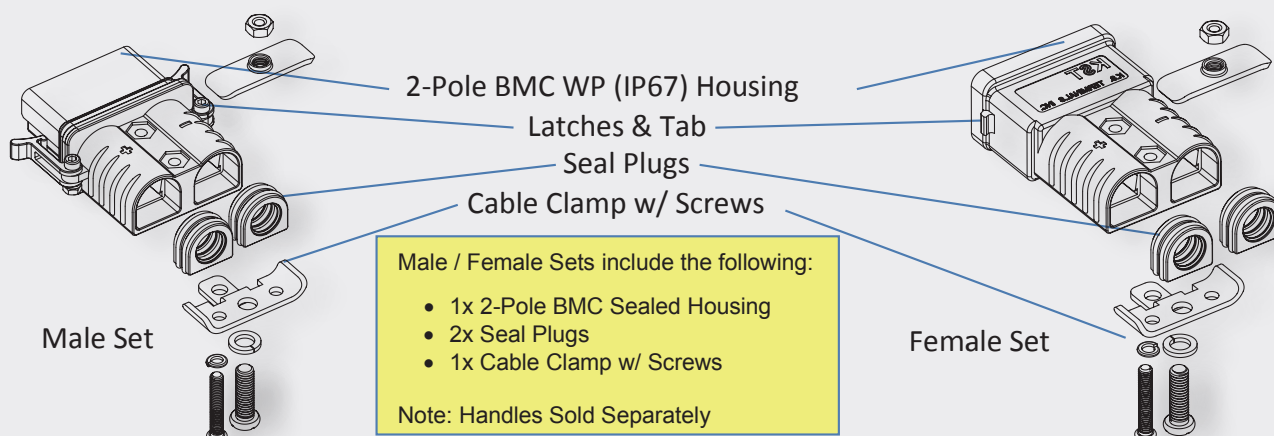
	H	L	W		H	L	W
BMCWPF2S	.63 (15.9)	2.65 (67.4)	1.61 (40.9)	BMCWPM2S	.63 (15.9)	2.36 (60)	1.37 (34.9)
BMCWPF2MS	.89 (22.5)	3.31 (84.1)	2.01 (51)	BMCWPM2MS	.89 (22.5)	3.09 (78.4)	1.75 (44.4)
BMCWPF2L	1.39 (35.3)	5.33 (135.5)	3.09 (78.4)	BMCWPM2L	1.39 (35.3)	4.96 (126)	2.75 (69.8)

Double-Pole BMC WP are designed for extreme environments where high power and waterproof protection are required. The connectors are IP67 weatherproof rated ensuring the connectors are able to withstand water for up to 30 minutes at depths of 1 meter under mated condition. Non-conductive swing latches & tabs ensure connectors remain seated, sealed and safeguard against accidental disconnection due to extreme vibration. An externally mounted cable clamp secures cable to the housing and provides stable wire management. It is important to note that unlike KST standard and GX 2-Pole connectors, KST Sealed 2-Pole connectors are not genderless, and come in two distinct and separate male and female sets.

FEATURES

- Rated to IP67 for Ingress Protection against water and dust.
- Swing Latch & tabs ensure seal against water and secure connectivity when subjected to extreme vibrations.
- Precision contact alignment & swiping provides high current throughput with minimal contact resistance. Swiping action cleans contact surfaces during connection/disconnection.
- Large range of colored housings allows flexible deployment of your internal requirements and helps ensure connectors are safely assembled and mated correctly.
- Provides long life even when subjected to applications requiring high power resulting in elevated temperatures.
- All the connectors are UL rated to 600 volts.
- Broad Operating Temperature Range: -20°C to 125°C

Double-Pole BMC WP 050 (Small), 120 (Medium-Small) & 300 (Large) Sets



Double-Pole BMC WP 050 (Small), 120 (Medium-Small) & 300 (Large) Sets

Item No.	Description	AWG (mm ²)	Housing Colors	Quantity
BMCWPF2S-5-SET	2-Pole WP 050 (Small) Set - 035A Contact ♀	12-10 (3-6)	BK BL OR RD	1 Box
BMCWPM2S-5-SET	2-Pole WP 050 (Small) Set - 035A Contact ♂	12-10 (3-6)	BK BL OR RD	1 Box
BMCWPF2S-8-SET	2-Pole WP 050 (Small) Set - 045A Contact ♀	8 (8)	BK BL OR RD	1 Box
BMCWPM2S-8-SET	2-Pole WP 050 (Small) Set - 045A Contact ♂	8 (8)	BK BL OR RD	1 Box
BMCWPF2S-14-SET	2-Pole WP 050 (Small) Set - 050A Contact ♀	6 (13)	BK BL OR RD	1 Box
BMCWPM2S-14-SET	2-Pole WP 050 (Small) Set - 050A Contact ♂	6 (13)	BK BL OR RD	1 Box
BMCWPF2MS-14-SET	2-Pole WP 120 (Medium-Small) Set - 080A Contact ♀	6 (13)	BK BL OR RD	1 Box
BMCWPM2MS-14-SET	2-Pole WP 120 (Medium-Small) Set - 080A Contact ♂	6 (13)	BK BL OR RD	1 Box
BMCWPF2MS-22-SET	2-Pole WP 120 (Medium-Small) Set - 100A Contact ♀	4 (21)	BK BL OR RD	1 Box
BMCWPM2MS-22-SET	2-Pole WP 120 (Medium-Small) Set - 100A Contact ♂	4 (21)	BK BL OR RD	1 Box
BMCWPF2MS-38-SET	2-Pole WP 120 (Medium-Small) Set - 120A Contact ♀	2 (38)	BK BL OR RD	1 Box
BMCWPM2MS-38-SET	2-Pole WP 120 (Medium-Small) Set - 120A Contact ♂	2 (38)	BK BL OR RD	1 Box
BMCWPF2L-70-SET	2-Pole WP 300 (Large) Set - 200A Contact ♀	2/0 (70)	BK BL OR RD	1 Box
BMCWPM2L-70-SET	2-Pole WP 300 (Large) Set - 200A Contact ♂	2/0 (70)	BK BL OR RD	1 Box
BMCWPF2L-80-SET	2-Pole WP 300 (Large) Set - 270A Contact ♀	3/0 (80)	BK BL OR RD	1 Box
BMCWPM2L-80-SET	2-Pole WP 300 (Large) Set - 270A Contact ♂	3/0 (80)	BK BL OR RD	1 Box
BMCWPF2L-100-SET	2-Pole WP 300 (Large) Set - 300A Contact ♀	4/0 (100)	BK BL OR RD	1 Box
BMCWPM2L-100-SET	2-Pole WP 300 (Large) Set - 300A Contact ♂	4/0 (100)	BK BL OR RD	1 Box



Web



e-Catalog

11210



UL 1977 Certified

This certification ensures that these connectors meet rigorous safety and performance standards, providing reassurance and peace of mind to users.



Single-Pole and Double-Pole Series



Both series offer a wide range of current ratings, from 15 to 350 Amps, making them suitable for use with up to 600 Volts of continuous AC or DC operation.



Reliable and Efficient Connectivity

With their versatility and robust design, KST BMC provides reliable and efficient connectivity solutions for diverse power systems.



Industry-Grade Alternatives to APP

KST's BMCs offer comparable housing, a wide range of contacts, and support for AWG wire sizes, meeting diverse industry standards and requirements. They are the equivalent of industry-leading battery connectors, ensuring compatibility and versatility.



E131576

E131576